



SACK & KIESELBACH

Maschinenfabrik GmbH since 1891



Smallest footprint, highest precision

The best hydraulic 250t embossing press
in the price/performance ratio MPP-250S



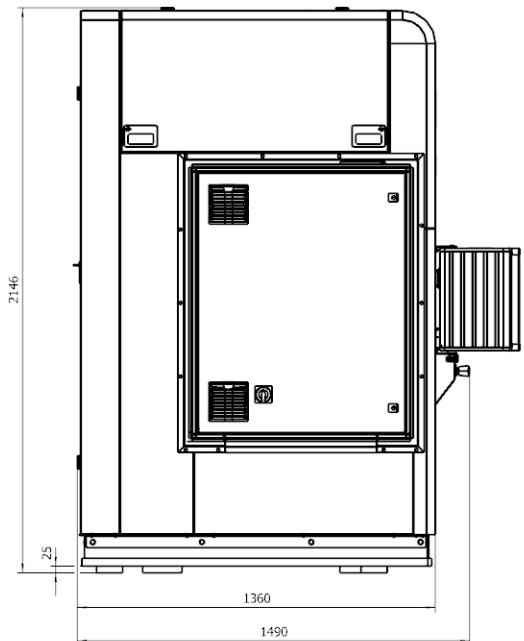
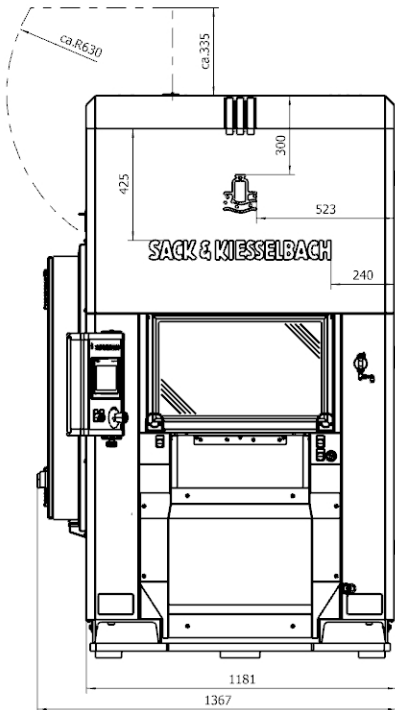
Precise manual production in the smallest footprint

The MPP-250S offers a full-fledged and ergonomically designed workstation with a minimal footprint and minimal overall height.

The shortest possible distance to the work surface and a covered table area ensure relaxed and safe working on the system.

The MPP-250S is also equipped with the proven Sack & Kieselbach precision medal tool.

Free pressing, as well as the inclusion of customer-specific tool kit, is of course possible.



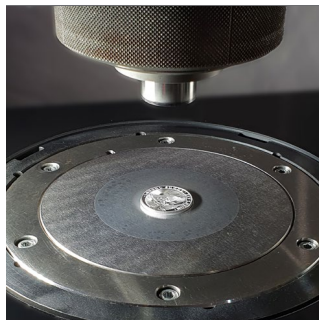
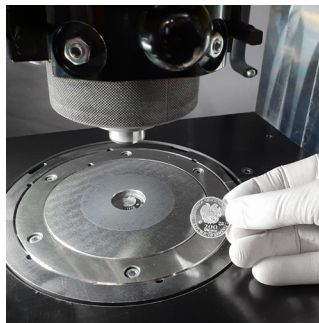
Plug & Play in well-known Sack & Kiesselbach quality

After pre-acceptance at the factory, installation is easy even without a Sack & Kiesselbach specialist.

Clear, clean, well-arranged: The easily accessible table area enables the shortest installation and setup times.

The press control system is based on the proven Siemens PLC standard with tool data memory. The simple, intuitive user interface is accessible via a high-resolution 7" touchscreen.

An energy-saving direct drive (SSpA) reduces operating costs.





MPP-250S – everything you need for embossing

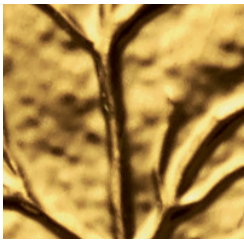


Compact, powerful and thus ideal for small batches of the highest standard.

Whether coins, bars and medals or jewelry, eyeglasses and watches – the MPP-250S offers you the accustomed quality in modern,

closed machine housing for various products in the usual Sack & Kiesselbach quality.

With the best, hydraulic 250t embossing press in the price/performance ratio, you enjoy exactly the flexibility you need for small and very small series.





Best minting quality in the most compact design

Data sheet – MPP-250S

Technical data:

Press force	2.500 kN
Coin or medal size	≤ ø 50* mm
Max. stroke	105 mm
Number of strokes (Manual mode)	≤ 7 /min
Ejector force	50 kN
Ejector stroke	20 mm

Dimensions:

Tool installation space (W x D)	390 x 280 mm
Tool installation height	540 mm
Floor space requirements (WxDxH)	1,3 x 1,5 x 2,1 m
Weight (without oil)	4150 kg

Speed:

Closing	100 mm/s
Pressing	2,4 mm/s
Opening	80 mm/s

Supply:

Max. power consumption	15 kW
Compressed air supply	min. 6 bar
Oil quantity	120 l

Miscellaneous:

Multiple pressing with adjustable press force
Dwell time
Tool cleaning
LCD-Touch-Panel
Optoelectronic 2-hand control switch
Servo drive
USB-Port for data exchange
Most compact design with minimum floor space
Extremely low height

Options:

Precision medal tool
Machine housing / Design S&K

*in silver and gold, depending on blank thickness



SACK & KIESELBACH

Maschinenfabrik GmbH
since 1891

Langster Str. 9 • D-40668 Meerbusch
T: +49 2150 7562 0 • F: +49 2150 7562 100
www.sack-kiesselbach.de • info@sack-kiesselbach.de